



# FIVE AND NINE PLUS

THE OFFICIAL NEWSLETTER  
OF THE  
APPLEDORE AND DISTRICT  
AMATEUR RADIO CLUB

Club Callsigns: G2FKO and GX2FKO  
Web Site : [www.adarc.co.uk](http://www.adarc.co.uk)

#### CLUB'S OFFICERS

President	Terry Adams	G4CHD	
Chairman	John Lovell	G3JKL	
Vice Chairman	Steve Smith	G6SQX	
Secretary	Alan Fisher	M6CCH	01237 422833 Email: <a href="mailto:fisheralan@gmail.com">fisheralan@gmail.com</a>
Treasurer	Mike Wogden	G4KXQ	
Committee	Graham Bailey	G1ZTJ	
	Dave Cottle	G4XWQ	
	Ray Hunter	M0TLO	
	Keith Luxton	G0AYM	
QSL Manager	John Lovell	G3JKL	
Web Master	John Lovell	G3JKL	
Exam Secretary	John Lovell	G3JKL	
Editor	Terry Adams	G4CHD	

January, 2018

#### EDITORIAL

On behalf of your Committee, a Happy New Year to everyone, or as Stuart (M1FWD), our illustrious crossword setter preferred on a recent Zepp Net - A Good New Year to you all. Whichever you prefer, may 2018 be a Healthy one.



This **month's meeting on January 15<sup>th</sup>** is another opportunity for members to share their memories in this wonderful hobby of ours. I'm sure many of you have an interesting tale to tell so come along and let us hear your story.

Can I also bring to your attention a new 70 cm Repeater and also a APRS 2m Digipeater located near South Molton details of which are given later in the Local Repeaters section.

Terry (G4CHD)

#### SILENT KEY

Martin (G7NTY) has written to let members know of the death of Michael Coombs (G4YBB) who lived in the Horns Cross, Bideford area. Michael died on the 18th Dec in the RDE Hospital.

Michael occasionally listened in to the Wednesday net if not actually participated. Michael was also very active within the Bideford Target Shooting Club, details can be found on their web site. Martin and his wife are also members of that club and it was through shooting that they were in frequent contact with him.

Martin (G7NTY)

#### CLUB MEETINGS

Meetings are held at the Appledore Football Social Club starting at 7.30pm for 8.00pm. Visitors always welcome. For further information, contact the Secretary, Alan (M6CCH) - details in the top panel.

<b>Jan 15th</b>	Memory Lane Evening - mini talks by members
<b>Feb 19th</b>	BITX40 - Homebrew Made Easy by Mike (G4KXQ)
<b>March 19th</b>	Club AGM
<b>April 16th</b>	Clansman Radio by Chris (G0FJY)

#### LOCAL SKEDS

<b>Zepp Net:</b>	<b>Mon, Tues, Thurs : 145.450 MHz</b> <b>4pm</b> <b>Wed via GB3DN - 4pm</b>
<b>2m Net:</b>	<b>Mon/Tues/Wed : 145.450MHz</b> <b>10.45 - 12.00 noon</b>
<b>6m Net:</b>	<b>Wednesday, 8pm, 51.480 MHz FM</b>
<b>HF Net:</b>	<b>Friday at 3pm 7.134 MHz ± qrm</b> <b>If conditions poor - 145.450 MHz</b>
<b>70cm Net:</b>	<b>Sunday, via GB3ND, 11am - noon</b> <b>local time.</b> <b>Available on Echolink node 221334</b>
<b>Top Band Net:</b>	<b>Sunday 1.860 MHz</b> <b>(LSB - 32W pep max) 9.30 - 10.15am</b> <b>Contact Dave (G4XWQ) for details</b>

## REPORT ON THE DECEMBER MEETING

### **Club Christmas Party**

There was a good attendance despite the coughs and colds etc that abound at this time of year. Unfortunately I forgot to take my camera so no pics I'm afraid (thank goodness I can hear you all groan!).

Dave (G0PGK) again provided a brain teasing Christmas Quiz which was won by Steve's (G6SQX) xyl Annie.

We were also wonderfully entertained by some baffling magic from professional magician Dave (ex M6IUI) ably assisted by Steve's xyl.

Many thanks to everyone who brought raffle prizes, to Dave for preparing the quiz, John for providing the music, xxxxxxx for the magic, and finally a big thank you to the Committee for all their hard work to produce a wonderful buffet and a very enjoyable evening.

Terry (G4CHD)

### LOCAL REPEATERS

#### **70cm Handy Cross Repeater/Echolink (#221334)**

##### **Gateway (GB3ND)**

User: Listen 433.35 MHz– Transmit 434.95 MHz

Access 1750 Hz Tone (Timeout 4.25 mins)/ 77 Hz CTCSS

Repeater keeper is Jeff (G4SOF)

#### **2m Stibb Cross Repeater (GB3DN)**

<http://www.g0rgl.co.uk/gb3dn.htm>

User: Listen 145.6375 MHz - Transmit 145.0375 MHz.

Access 1750 Hz Tone or 77 Hz CTCSS

Repeater keeper is Tony (G1BHM)

#### **70cm Twitchen (nr South Molton) Analogue Repeater (GB3SF)**

User: Listen 430.9375 MHz - Transmit 438.5375 MHz

Access 77Hz CTCSS

Repeater keeper is Steve (G6SQX)

#### **APRS Digipeater (MB7VE)**

Frequency 144.800 MHz

Repeater keeper is Steve (G6SQX)

### LOCAL SPECIAL EVENT

I received the following from John (G8CPN)

On 26 February 1918, HMHS Glenart Castle was torpedoed off Lundy. To commemorate the centenary of this I have been allocated the special event call sign GB1GC for the period 24/02/2018 to 04/03/2018 (I tried for GB100GC but it was not available) and aim to be on as much and on as many bands as possible.

I have a site where there is ample room to erect aerials and will have up to UK maximum power available 160 - 10m and possibly other bands too. My location is EX39 5SH.

I am writing to see if there may be some members of your club who would be interested in operating during this period and maybe bring some of their own gear as well.

I am also approaching the Holsworthy club, which I don't belong to either as it is difficult to attend.

## CROSSWORD

Many thanks to Stuart (M1FWD) for this month's Crossword.

The answers will be in next month's Newsletter. Good luck !

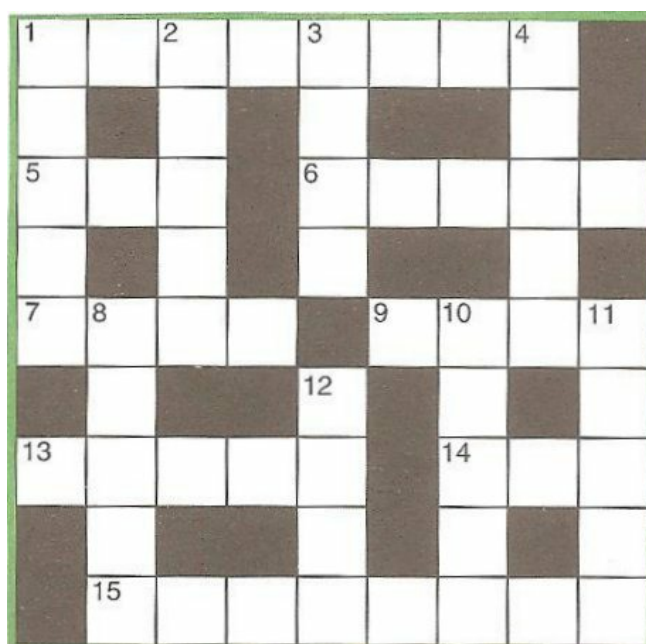


### **CLUES ACROSS**

- 1) A permanently polarized piece of dielectric material (8)
- 5) Tree of the genus Ulmus (3)
- 6) Echo Alpha (EA) land (5)
- 7) Directional aerial with multiple parallel elements (4)
- 9) Unwanted electromagnetic energy dissipation (4)
- 13) Oscar Yankee (OY) islands (5)
- 14) 2011 Pakistani social drama film produced by Shoaib Mansoor (3)
- 15) ? field, a region of variable force around current-carrying conductors (8)

### **CLUES DOWN**

- 1) Opponent in war (5)
- 2) Austrian manufacturer of audio and video equipment between 1919 and 1982 (5)
- 3) A critical examination (4)
- 4) Electrical circuit-breaker units (5)
- 8) A warning of danger (5)
- 10) The path of an electron round an atomic nucleus (5)
- 11) A law excluding females from dynastic succession (5)
- 12) Capital city of Hotel Bravo Nine (HB9) land (4)



### **Last month's answers :-**

**ANSWERS ACROSS:** 1) herb 4) step 7) Christmas  
8) Isle 10) trio 12) mistletoe 13) year 14) so-so

**ANSWERS DOWN:** 2) ethos 3) Boise 5) timer 6) pesto  
8) Ismay 9) Lassa 10) teens 11) icons

## SUDOKU PUZZLE

The aim is to enter a number into each cell so that **any column, or any row, or any block of cells contains all numbers from 1 to 9**

2				8				
6			7		4			
1				6	9	3		
8		1					4	
		6				9		
	7					6		8
		5	6		1			3
				4	3			1
			9					4

Terry (G4CHD)



With the end of support from the RSGB for affiliated RAYNET groups, the North & Mid Devon groups in order to maintain our affiliation and independence have reformed as the Exmoor Radio Club.

Originally formed in 1975 we have adopted the call sign of one of the founder members the late Dick Leeves (1904-2003) who was first licensed as 2LV in 1920.

(Picture of Dick in his shack in South Molton taken in 1995 celebrating 75 years of operating).



The primary purpose of the club is to maintain our 25+ years of support for the Exmoor Rotary Youth Challenge and to act as a link to anyone with an interest in the practical aspects of our hobby with the local Amateur Radio community.

We are based in South Molton and meet at various venues in the area generally on the last Tuesday of the month. The venue is posted on aprs.fi

<http://aprs.fi/?call=G2LV&others=1>

We will be having our next meeting Tuesday 23<sup>rd</sup> January at the Swan in Bampton at 7.30pm where representatives from the Exmoor Rotary and the Exmoor Search and Rescue Team will be giving presentations.

If you are interested in supporting the event please come along.

For further details please contact

Steve G6SQX email: [boghay@hotmail.co.uk](mailto:boghay@hotmail.co.uk)

[http://www.exmoor-rotary.org.uk/youth\\_chall.html](http://www.exmoor-rotary.org.uk/youth_chall.html)

<http://www.exmoor-srt.org.uk/index.php/contact-us>

## FOX1B SATELLITE INFORMATION

Many thanks to Mike (G3PGA) for providing the following information.

The satellite is also sometimes referred to as A091.

To work the satellite, refer to the excellent website by N2YO to obtain orbit predictions. Westerly passes are perhaps preferred as there is likely to be less QRM from European stations.

Frequency details are :-

UP (TX)	435.250 MHz	CTCSS 67 Hz
DOWN (RX)	145.960 MHz	

Mike advises the use of headphones to prevent audio feedback.

Good luck!

## SATELLITE ANTENNA WEB ARTICLE

The following reference to a suitable satellite antenna - Lindenblad - was brought to my attention and is worthy of a read :-

<http://www.amsat.org/amsat/articles/w6shp/lindy.html>

There are numerous articles referring to the Lindenblad antenna design which was new to me.

## NORTH DEVON HISTORICAL PHOTO

Many thanks to Annie, Steve's (G6SQX) xyl for this photo which was probably taken on a summer Saturday morning in the fifties as it appears from the loco/tender/carriages to be the summer special taking holidaymakers home to Wolverhampton from Ilfracombe crossing Castle Hill viaduct at Filleigh (now part of the North Devon link road)





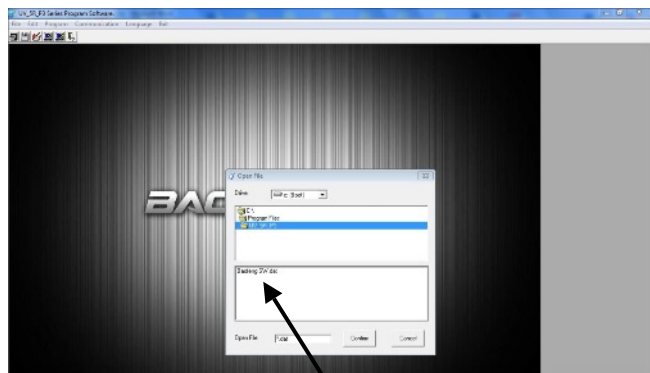
As you can see on the previous page, my data file (ringed in red) is called **Baofeng SW.dat**.

To get the Save File option to work you must first remove the \* from the Save File window, but make sure you leave the (.dat) in the window, now place your cursor to the left of the dot in the window and type whatever you are going to call it (I've called mine Baofeng SW.dat) this covers all the South West Stations and repeaters I need.

You can add more stations to the list at any time as long as you save it with the same name, or you can make up a new list for a different area and save it as before as long as you use a different file name so you don't overwrite your saved data.

To open a list if you have more than one open the program as normal, left click on File in the top left hand corner the from the drop down menu left click open

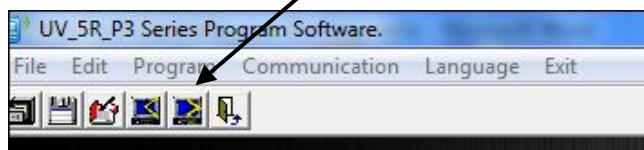
You should see a window like the one shown below -



Now left click on the file you want to open, it will turn blue and the open file window will change to your selection, now left click confirm.

A window will open and say "Succeed fold the parameter from file" now let click OK and you should new see the list of stations you have saved.

If you have more than one list open the one you want to use, then left click Write data to Radio button this will replace all other lists you have in the radio.



Hope this article helps

David (2E0IXX)

### My Channel list looks like this

Channel	Band	RX Frequency	TX Frequency	CTCSS/DCS Dec	CTCSS/DCS Enc	TX Power	W/N	PTT-ID	BusyLock	Scan_Add	SigCode	CH-Name
0	HF/UHI	145.45000	145.45000	OFF	OFF	HIGH	W	OFF	OFF	ON	1	ZEPP
1	HF/UHI	145.63750	145.03750	OFF	77.0	HIGH	W	OFF	OFF	ON	3	GB3DN
2	HF/UHI	433.35000	434.95000	OFF	77.0	HIGH	W	OFF	OFF	ON	3	GB3ND
3	HF/UHI	430.93750	438.53750	OFF	77.0	HIGH	W	OFF	OFF	ON	3	GB3SF
4	HF/UHI	433.50000	434.65000	OFF	77.0	HIGH	W	OFF	OFF	ON	3	GB3CH
5	HF/UHI	430.97500	438.57500	OFF	77.0	HIGH	W	OFF	OFF	ON	3	GB3DQ
6	HF/UHI	145.61250	145.01250	OFF	77.0	HIGH	W	OFF	OFF	ON	3	GB3EW
7	HF/UHI	145.76250	145.16250	OFF	77.0	HIGH	W	OFF	OFF	ON	3	GB3PL
8	HF/UHI	430.85000	438.45000	OFF	77.0	HIGH	W	OFF	OFF	ON	3	GB3IE
9	HF/UHI	145.78750	145.18750	OFF	77.0	HIGH	W	OFF	OFF	ON	3	GB3JL
10	HF/UHI	145.71250	145.11250	OFF	77.0	HIGH	W	OFF	OFF	ON	3	GB3SW
11	HF/UHI	145.65000	145.05000	OFF	94.8	HIGH	W	OFF	OFF	ON	5	GB3TR
12	HF/UHI	433.07500	433.67500	OFF	94.8	HIGH	W	OFF	OFF	ON	5	GB3VS
13	HF/UHI	430.82500	438.42500	OFF	77.0	HIGH	W	OFF	OFF	ON	3	GB3ZB
14	HF/UHI	433.05000	434.65000	OFF	88.5	HIGH	W	OFF	OFF	ON	6	GB3YS
15	HF/UHI	433.27500	434.87500	OFF	94.8	HIGH	W	OFF	OFF	ON	5	GB3SD
16	HF/UHI	145.63750	145.03750	OFF	71.9	HIGH	W	OFF	OFF	ON		GB3GJ
17	HF/UHI	433.32500	434.92500	OFF	71.9	HIGH	W	OFF	OFF	ON		GB3GU
18	HF/UHI	433.27500	434.87500	OFF	94.8	HIGH	W	OFF	OFF	ON	5	GB3RH
19	HF/UHI	145.72500	145.12500	OFF	77.0	HIGH	W	OFF	OFF	ON	3	GB3NC
20	HF/UHI	433.00000	434.60000	OFF	71.9	HIGH	W	OFF	OFF	ON		GB3DT
21	HF/UHI	145.67500	145.07500	OFF	77.0	HIGH	W	OFF	OFF	ON	3	GB7IE
22	HF/UHI	430.93750	438.53750	OFF	71.9	HIGH	W	OFF	OFF	ON		GB7SZ