



FIVE AND NINE PLUS

THE OFFICIAL NEWSLETTER
OF THE
APPLEDORE AND DISTRICT
AMATEUR RADIO CLUB

Club Callsigns: G2FKO and GX2FKO
Web Site : www.adarc.co.uk

CLUB'S OFFICERS

President	Terry Adams	G4CHD
Chairman	John Lovell	G3JKL
Vice Chairman	Mike Wogden	G4KXQ
Secretary	Alan Fisher	2E0EUZ secretary@adarc.co.uk
Treasurer	Ray Hunter	M0TLO

Committee	Andrew Brook	M0MFS
	Keith Luxton	G0AYM
	Ben Louder	2E0FTZ
	Graham Stephens	M1GRA
QSL Manager	John Lovell	G3JKL
Web Master	John Lovell	G3JKL
Exam Secretary	John Lovell	G3JKL
Editor	Terry Adams	G4CHD terrywho35@gmail.com

January 2022

EDITORIAL

Welcome to the first Club Newsletter for this New Year and on behalf of myself and your Committee a Healthy Prosperous New Year to to all.



My first bit of news is that **this month's Meeting next Monday (January 17th)** is on and will be **John (G3JKL) doing his 'finger on the button' Radio Quiz**. He has two volunteers at present but it would be ideal if two more were to volunteer. It's great fun both participating and being in the audience so come along and have a super entertaining evening. Doors open around 7.30pm at the Appledore Football Ground Clubhouse and the Quiz will start around 8pm.

It therefore looks hopeful that our **February Meeting** should also be on and again something to really look forward to with **Drew (M7ABR)** giving our first talk this year on **February 21st on 'Is There a Place for APRS in Today's World?'** Should be most informative and interesting so something put in the diary.

Then our Meeting on **March 21st** is of course our **AGM** which after being virtual for the last two years should hopefully be 'in the flesh' as a most welcome change.

So let's hope that things are on the up and that 2022 will be a return to normality.

Finally as always, if any member has any ideas on a suitable talk or Newsletter article, please don't hesitate to put your ideas forward to any Committee member.

Once again, a Healthy and Happy New Year to everyone

Terry (G4CHD)

CLUB MEETINGS

At our next Meeting on **January 17th, John (G3JKL) will host a Radio Quiz** at the Clubhouse starting at 8pm - Clubhouse open from 7.30pm.

On **February 21st, Drew (M7ABR)** will give a talk at the Clubhouse entitled **'Is There a Place for APRS in Today's World'** starting at 8pm - Clubhouse open from 7.30pm.

Finally our **AGM** will be on **Monday March 21st** at the Clubhouse starting at 8pm - Clubhouse open from 7.30pm.

If you have any suggestions of a suitable talk etc please contact any Committee member.

LOCAL REPEATERS

2m Stibb Cross Repeater (GB3DN)

<http://www.g0rql.co.uk/gb3dn.htm>

User: Listen 145.6375 MHz - Transmit 145.0375 MHz.

Access 1750 Hz Tone or 77 Hz CTCSS

Repeater keeper is Tony (G1BHM)

Fusion/C4FM/WiresX Gateway (MB6DT)

Frequency 144.8125 MHz.

Gateway Keeper Darren (2E0LVC)

Fusion/C4FM/WiresX Gateway (MB6DN)

Frequency 144.825 MHz.

Gateway Keeper Drew (M0MFS)

SUDOKU PUZZLE

After many years of producing this puzzle and not really knowing whether it is either wanted or used, I have decided to remove it from the Newsletter. Of course if any member would like it reintroduced then I'll be happy to do so - please just ask.

Terry (G4CHD)

CROSSWORD

Many thanks to Stuart (M1FWD) for this month's Crossword.

The answers are in next month's Newsletter. Good luck !

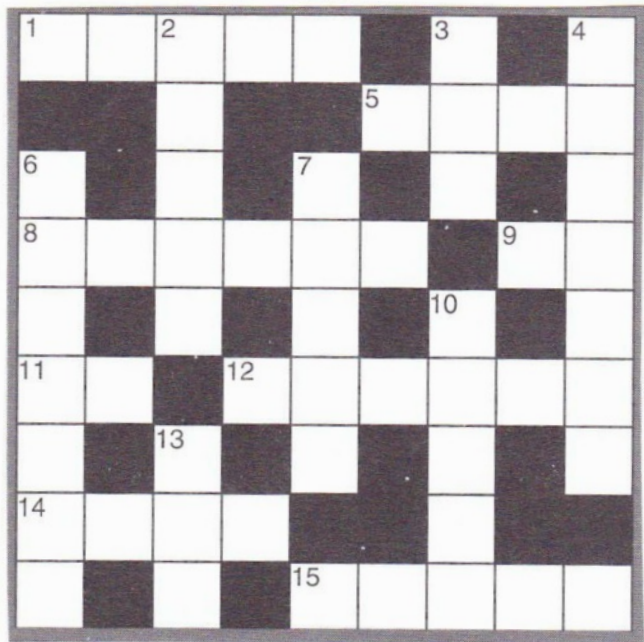


CLUES ACROSS

- 1) A weapon firing barbs attached by wires to batteries, causing temporary paralysis (5)
- 5) Component for protecting an electric circuit (4)
- 8) Isles of ? – an archipelago off the coast of Cornwall (6)
- 9) The thing in question (2)
- 11) Negative assertion (2)
- 12) Aircraft manufacturer in Papa Alpha (PA) land, 1912-1996 (6)
- 14) A direction in an aerial's radiation pattern where almost no waves are radiated (4)
- 15) Brand of radio equipment from Juliet Alpha (JA) land (5)

CLUES DOWN

- 2) Yankee Kilo (YK) land (5)
- 3) Serial ? - in computing, a shared channel that transmits data one bit after the other over a single wire or fibre (3)
- 4) A period of 100 years (7)
- 6) Extremely stupid or foolish (7)
- 7) The joint between the forearm and the upper arm (5)
- 10) Marine fish of the family Rajidae (5)
- 13) A thickness or layer of certain materials (3)



Last month's answers :-

ANSWERS ACROSS: 1) Chile 3) red 6) duct 7) Iggy 8) resistors 13) orca 14) kiln 15) try 16) Honda

ANSWERS DOWN: 1) CODAR 2) Incas 4) Edgar 5) lift 9) error 10) Iran 11) onion 12) Santa

Terry (G4CHD)

SOME OLD MULTICHOICE QUESTION FROM DECEMBER 1999

How about having a go yourself!

The impedance at resonance of a series tuned circuit containing inductance and capacitance is :-

- a maximum
- b minimum
- c capacitive
- d inductive.

The resonant frequency of a tuned circuit is given by the expression :-

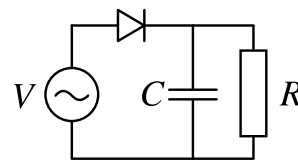
- a $f = 1/\pi\sqrt{LC}$
- b $f = 1/2\pi\sqrt{LC}$
- c $f = 2\pi\sqrt{LC}$
- d $f = 2\pi\sqrt{LC} \times T$

What is the output voltage when a transformer with a 3 to 1 turns ratio is connected to a 240 V mains supply?

- a 60V
- b 80V
- c 240V
- d 2160V

In the circuit shown opposite, the diode rectifier circuit is of the type known as

- a half wave
- b hi-phase
- c bridge
- d quarter wave



A broadcast receiver having an intermediate frequency of 470kHz receives a strong telephony signal on 908kHz from a nearby amateur station transmitting on a frequency of 1848kHz. The transmitter is known to be free of measurable spurious emissions. This is an example of

- a an image frequency response by the receiver
- b the result of high harmonic content in the local oscillators
- c the result of using A3E rather than J3E
- d breakthrough in poorly designed intermediate frequency receiver.

So that's it for this month - enjoy the Newsletter and keep any articles etc coming

Very Best 73s Terry G4CHD